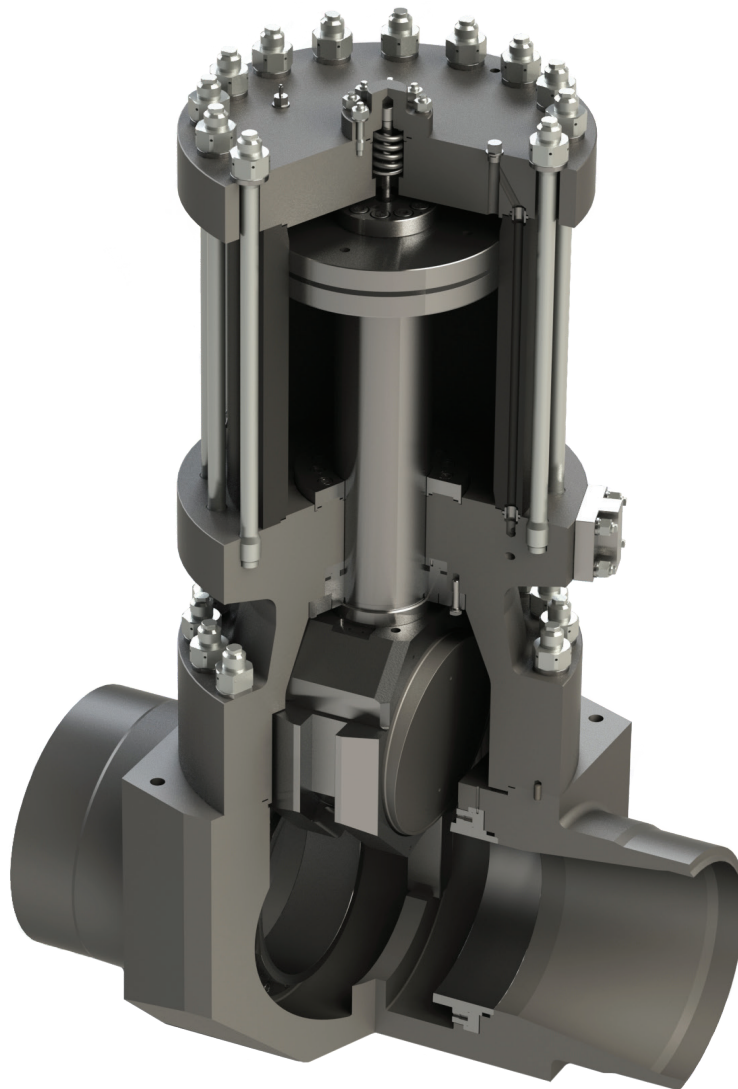
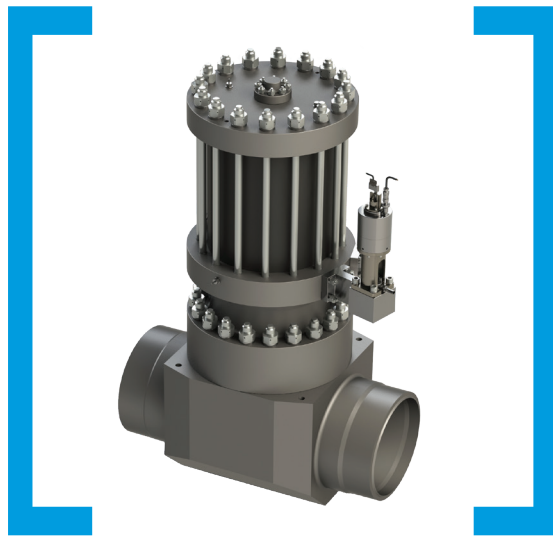


# PPS Gate Valve

Main steam and main  
feedwater isolation





# PPS Gate Valve

## Main steam and main feedwater isolation

Isolation valve, actuated by the medium in the system, using pressurizing principle. Block- design with direct mounted pilot valves.

Used for main steam isolation valve in BWR and PWR reactors and as a main feed-water isolation valve.

### Key features

- Size up to 29.9" (760mm)
- Class up to 2500
- Forged/cast carbon or stainless steel
- QME-1 qualified for steam. Variety of different qualification programs for water and two-phase flows

### Benefits

- Stable performance and very high tightness classes
- Stable operations under all specified conditions (steam, water & transitions)
- Opening & closing with auxiliary medium possible if no power
- The closing characteristic that ensures very low loading of the piping system.
- Very low pressure losses, hence contributes to high efficiency of the power plant.
- The simplest and most reliable controlling system on the market.
- High variety of redundancy levels.
- Retracting discs (no contact between the disc and the seat, during the stroke)
- No stuffing box