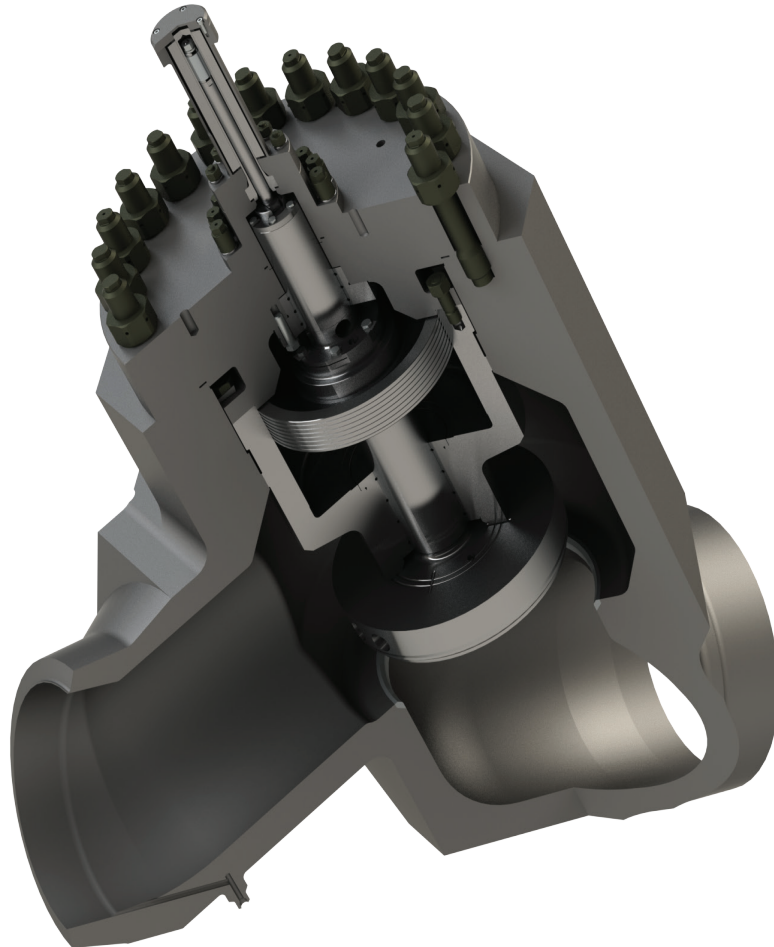


KC Type Dampened Check Globe Valve

Main feed-water and bypass
feed-water isolation





KC Type Dampened Check Globe Valve

Main feed-water and bypass feed-water isolation

Isolation valve, actuated by the medium in the system. Special dampening effect has been done, using the piston.

Used as a main feed-water and by-pass feed-water isolation valve

Key features

- Size up to 29.9" (760mm)
- Class up to 1500
- Forged carbon or stainless steel
- Variety of different qualification programs for water

Benefits

- Stable performance and very high tightness classes
- Stable operations under all specified conditions (steam, water & transitions)
- The closing characteristic that ensures very low loading of the piping system (dampening effect)
- Fast closing (90% of the stroke) and dampened closing (last 10% of the stroke), excellent protection against water-hammer