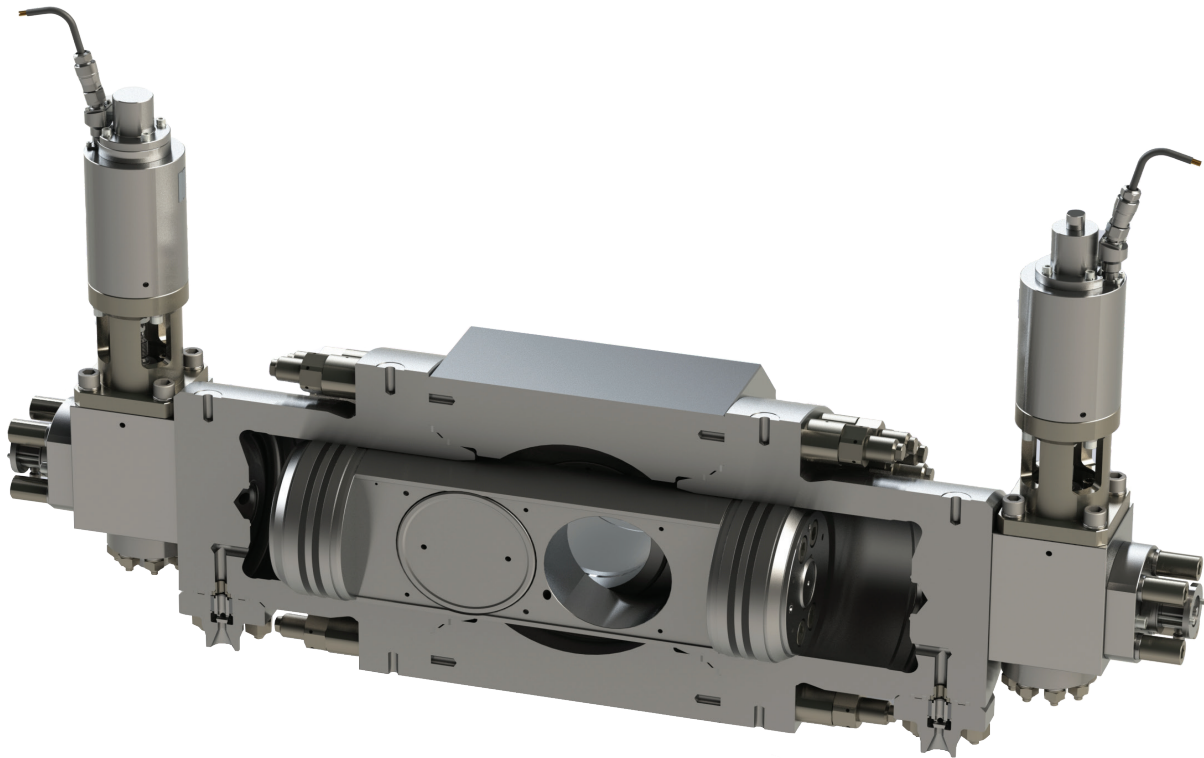
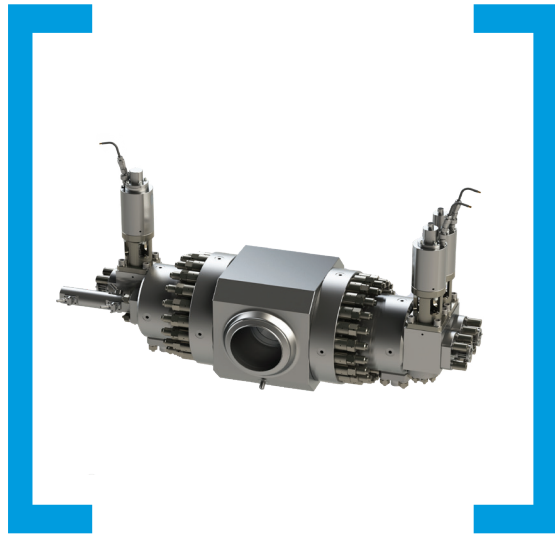


EPS Type Gate Valve

Reactor isolation





EPS Type Gate Valve

Reactor isolation

Extremely compact, robust design, with directly mounted pilot valves, without any external lines. The configuration has been done in such way that the center of gravity matches the center of gravity of the pipe, hence particularly applicable where high seismic and/or explosion forces could be expected

Isolation valve, actuated by the medium in the system, using pressurizing principle. Block- design with direct mounted pilot valves.

Generally used as a reactor isolation valve in PWR reactor types (primarily for submarine usage)

Key features

- Size up to 7" (80 mm)
- Class up to 2500
- Forged/cast carbon or stainless steel
- Variety of different qualification programs for water and two-phase flows

Benefits

- Stable performance and very high tightness classes
- Very low center of gravity
- Opening & closing with auxiliary medium possible if no power
- The closing characteristic that ensures very low loading of the piping system.
- Very low pressure losses, hence contributes to high efficiency of the power plant.
- Extremely low noise
- Guided flow – no swirls in the valve